

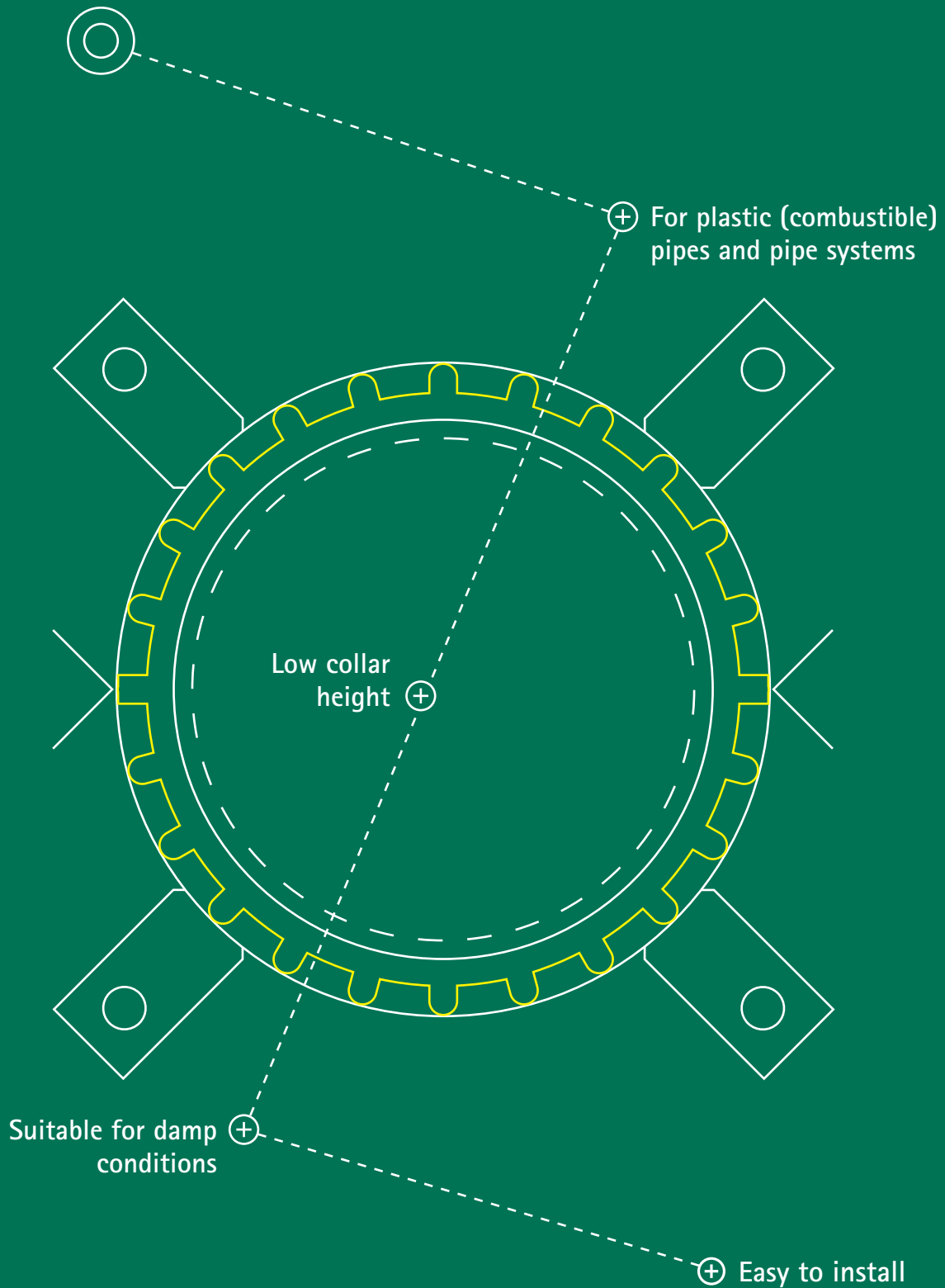
Zero distance possible
between fire collars



Pacifyre[®] AWM III

Fire collar

Pacifyre® AWM III



Inspired by smart solutions from the start

Walraven is a globally active company in the installation industry, founded in 1942. We have always been dedicated to make the work of our customers easier and more effective. With simple and smart solutions, comprehensive services and excellent support.

Walraven. The value of smart

Pacifyre® AWM III

Proven performance

Built-up fire collar for plastic (combustible) pipes and pipe systems as well as for apertures in walls (solid or light partition) and ceilings with fire protection requirements in accordance with legislation. The Pacifyre® AWM III Fire Collar has been extensively tested by institutes in various countries and easily meets today's building regulations according to EN 13501-2. The test results are acknowledged by various test institutes throughout Europe.



Applications

Approved pipes / pipe systems in EI240 quality:

- Noise reducing pipe systems e.g.:
 - Friatec: Friaphon®, dBlue
 - Geberit: Silent-db20, Silent-PP
 - Wavin: Wavin AS, SiTech
 - PipeLife: PP Master
 - Rehau: Raupiano PLUS
- Combustible pipe systems (up to outer diameter 200 mm) in all common pipe materials, e.g.:
 - PVC
 - PP
 - PE
 - PE-X
 - ABS or ASA
- Pipes (up to outer diameter 200 mm) for central dust extraction and pneumatic dispatch systems

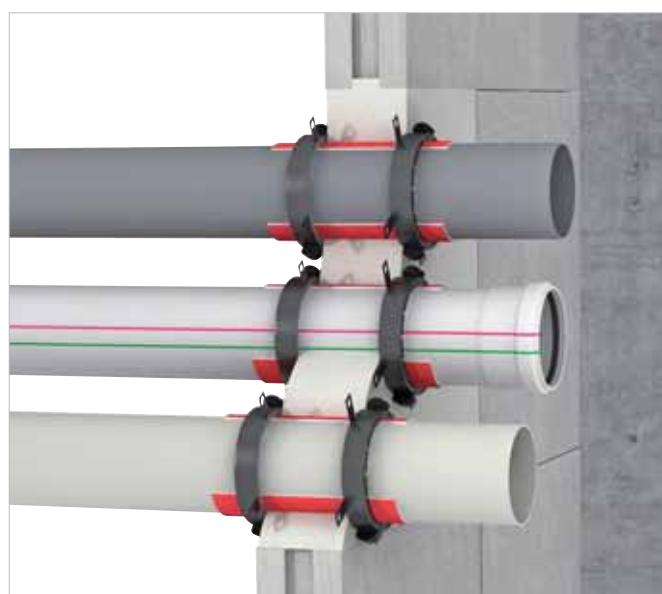
Approved insulations and seals:

- PE-noise insulation ≤ 9 mm
- Synthetic rubber insulation ≤ 32 mm
- ≤ 10 mm Tangit FP 430 Fire Protection Acrylic Sealant
- ≤ 10 mm mineral wool (loose)
- Mortar, plaster, concrete (e.g. Pacifyre® FPM Fire Protection Mortar)

Note: Walraven recommends to mark each individual penetration with a Pacifyre® AWM III Fire Collar by means of a Pacifyre® ID-Card.

Features and benefits

- Zero distance is possible between fire collars
- Low collar height, allowing building of bends, sockets and T-joints close to the wall or ceiling
- In problematic built-in situations the use of an oversized collar is permitted (up to max. 3 sizes bigger)
- Build in is possible without additional fixings (by simply bending and sliding the fixing tabs)
- Suitable for damp conditions
- Should be fixed on both sides of the wall / ceiling
- Easily installed due to 2 part collar construction
- Various finish possibilities, e.g.: acrylic sealant, mortar, etc.



Aperture with optional noise insulation



Built-in situation solid and light partition walls ≥ 100 mm



Built-in situation ceilings ≥ 150 mm

Technical details

Pipe		Fire Collar			Part No.	Number of fixing tabs
Outer diameter (mm)	Inner diameter (mm)	Outer diameter (mm)	Height (mm)			
32	38	47	26	2135032034	2	
40	46	55	26	2135040042	2	
50	56	65	26	2135050052	2	
63	69	82	26	2135063065	4	
75	81	94	26	2135075077	4	
90	96	114	26	2135090092	4	
100/110	116	134	26	2135110112	4	
125	132	150	40	2135125125	4	
135/140	144	168	40	2135140140	4	
160	164	188	40	2135160160	4	
180	184	218	40	2135180180	4	
200	204	238	40	2135200200	4	

Other dimensions on request.

The right combination

Tangit FP 430 Fire Protection Acrylic Sealant

For fire resistance and smoke tight filling of annular holes or joints ≤ 10 mm.

Part No. 2181430



Pacifyre® FPM Fire Protection Mortar

Fire protecting and smoke tight mortar (A1/M60) for safe sealing of annular holes and joints.

Part No. 2180015300



Pacifyre® ID-Card

For marking, identification and inspection. For all Pacifyre® pipe penetrations.

Part No. 21X99999XX (X = card or sticker, XX = country specific)



Operational benefits

Prevents:

- the fire from spreading
- the smoke from spreading
- the need for countless product sizes

Installation instructions



1. Install pipe and if necessary apply noise insulation



2. Ensure smoke tight seal of the annular hole (e.g. with Pacifyre® FPM Fire Protection Mortar or Tangit FP 430 Fire Protection Acrylic Sealant)



3. Select the correct collar size (in problematic built-in situations the use of an oversized collar is permitted up to max. 3 sizes bigger)



4. Drill (bending and sliding of fixing tabs is permitted)



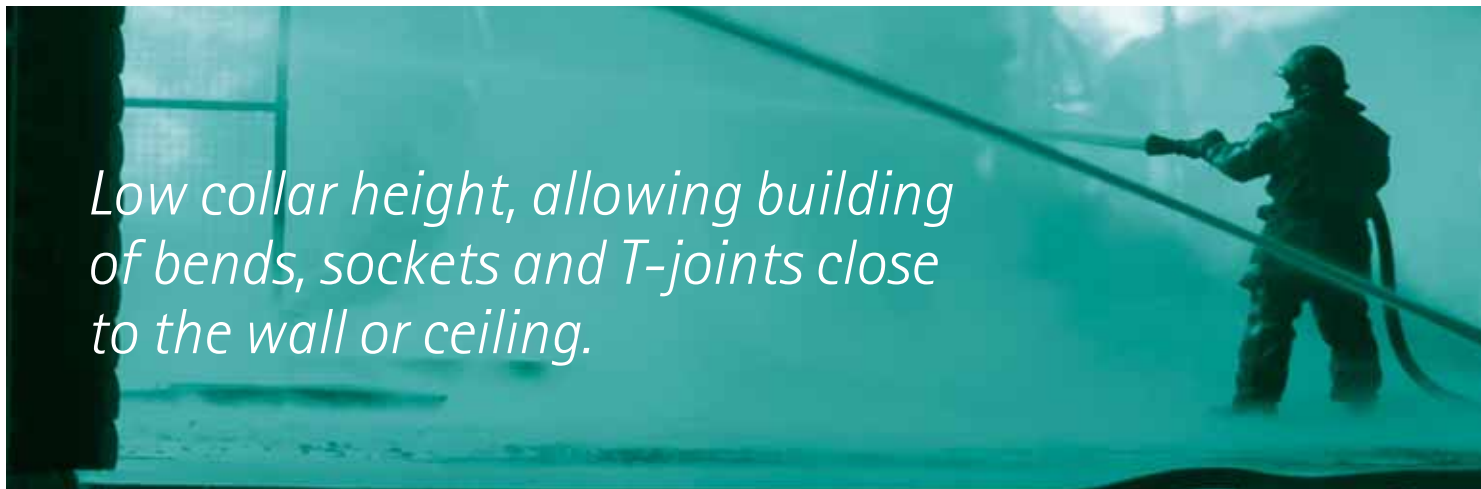
5. Fix using the screws supplied



6. Apply the Pacifyre® ID-Card

Note: the built-in guidelines of the general building regulations must be adhered to.

Low collar height, allowing building of bends, sockets and T-joints close to the wall or ceiling.



Special applications



Zero distance possible between the collars



Combustible pipes up to 200 mm outer diameter



Fixing tabs mortared (90° reversed)



With PE-Insulation ≤ 9 mm
(or ≤ 32 mm synthetic rubber
insulation)



Bends directly under the ceiling



Also suitable for diagonal
penetrations



T-joint close to penetration



Find out how we can support you

Would you like to find out more about any of the solutions described in this brochure?

Or would you like to discuss how we could help you find the best possible solution for your project? Get in touch today!

Singapore South East Asia & Pacific

Walraven Pte. Ltd.

71 Lorong 23 Geylang #06-14
388386 Singapore (SG)
customerservice.sg@walraven.com



Walraven Group

Mijdrecht (NL) · Tienen (BE) · Bayreuth (DE) · Banbury (GB) · Malmö (SE) · Grenoble (FR) · Barcelona (ES) · Kraków (PL)
Mladá Boleslav (CZ) · Moscow (RU) · Kyiv (UA) · Detroit (US) · Shanghai (CN) · Dubai (AE) · Budapest (HU) · Mumbai (IN)
Singapore (SG)

