

Walraven Yeti® 480 Support System

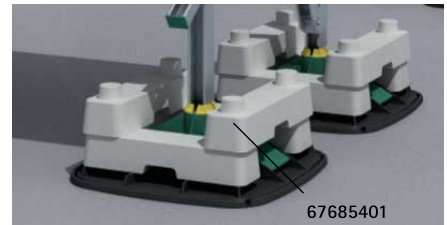
for Rooftop Installations

(1 04 05)



Features and benefits

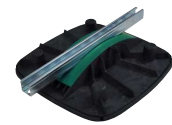
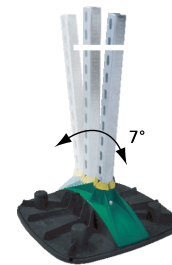
- modular supporting system for HVAC equipment, solar panels, walkways, pipe work, cable runs, etc.
- for flat and low pitched roofs
- adjustable up to 7° to compensate for roof pitch
- 360° rotatable insert for BIS RapidStrut® 1-5/8" x 1-5/8" or BIS RapidStrut® DS 5 (1-5/8" x 2")
- with non-slip anti-vibration mat (at PVC roofs a separating layer must be installed to protect against plasticizer migration - see Walraven BIS Yeti® Triplex Separation Layer)
- with optional stackable ballast block for increased weight / stability
- mouldings made of WPC, a composite of recycled plastic and wood fibre
- resistant to UV and chemical influences
- noise reduction according to DIN EN ISO 10140-1 and DIN EN ISO 10140-3 up to 31 dB(A)
- UV-resistance according to EN ISO 16474-3:2014-02 - certified by ITB
- BIS Yeti 480 H-set consisting of:
 - 2 x BIS Yeti® 480 vertical, including non-slip anti-vibration mat (made of rubber)
 - 4 x BIS Strut Connector 90°
 - 8 x hexagon head bolts and slide nuts



Nr.
1762-001-19



ITB No.
LZM00-02259



Part No.	Model	L	L	B	B	H	H	h	h	M _{a,y}	Pack 1
67685001	Vertical	480 mm	18.75 (")	480 (mm)	18.75 (")	160 (mm)	6.2992 (")	80 (mm)	3.1496 (")	200.0 (Nm)	1
67685101	Horizontal	480 mm	18.75	480	18.75	80	3.1496	80	3.1496	200.0	1
67685301	H-set (without Strut Rail)	480 mm	18.75	480	18.75	160	6.2992	80	3.1496	200.0	1

* = Max. allowed load without taking influence of insulation into account, using RapidStrut® channel type 41|H

For a detailed calculation and for support how to spread the load please contact Walraven Technical Support.

In cases where a foot is used in roof applications, the installer is obliged to verify maximum load capacity of roof before installation.

