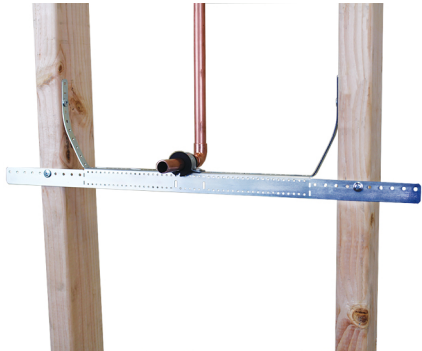
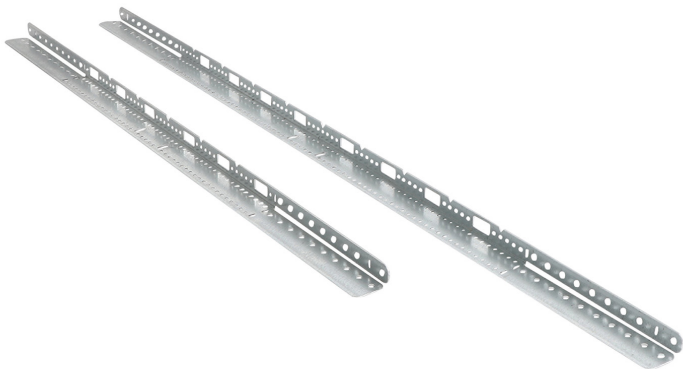


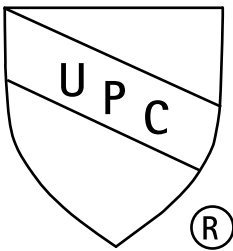
Heavy Angled Wall Bracket (HAWB)

(02 05 208)



Features and benefits

- used to support vertical piping and horizontal stub-outs within the wall
- bracket mounts at 4 points for added strength, stability and durability
- adjustable for ease of use with studs that are not exactly on center
- hole pattern allows for adjustable stub-outs every 2" +or- 1/2"
- material: steel 1.0242
- pre-galvanized
- packaged in convenient resealable tube



Part No.	Size	Model	Type	L	L	B	B	H	H	s	s	Pack 1
59494002	457.4 - 660.4 mm	18 - 26"	HAWB2	711.4 mm	28	25,5	1	16	5/8	1,25	0,04	25

