

BIS Stainless Steel Expansion Guide Assembly

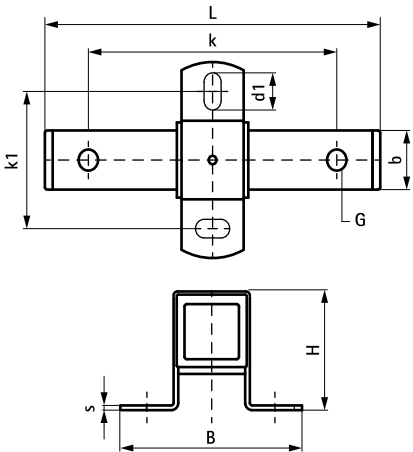
(M 19 10)

fixing with sliding assemblies



Features and benefits

- stable and safe double support for pipe expansion
- fix directly on the building structure or in combination with rail systems
- suitable for ceiling mounting (suspended) and floor mounting (standing mounted)
- tapped with different sized connecting holes (13/17 mm) on opposing faces
- can be combined with HD1501 or HD500 clamps
- material: metal parts made of stainless steel 1.4404 (A4) - EN 10088, AISI 316; sliding strips made of PE colour white, endcaps made of PE colour black



Part No.	Type	G	L	L	B	B	H	H	b	b	s	s	d1	d1	k	k	k1	k1	SL (max.)	F _{a,z}	F _{a,z}	Pack
6667813	FG3	1/2"	255 mm	9.64 "	146 (mm)	5.98 "	90 (mm)	3.54 "	40 (mm)	1.57 "	5.0 (mm)	0.19 "	20 x 13 (mm)	0.91 x 0.51 "	200 (mm)	7.87 "	100 (mm)	4.13 "	4.12 "	7,500 (N)	1,700 (lbf)	5