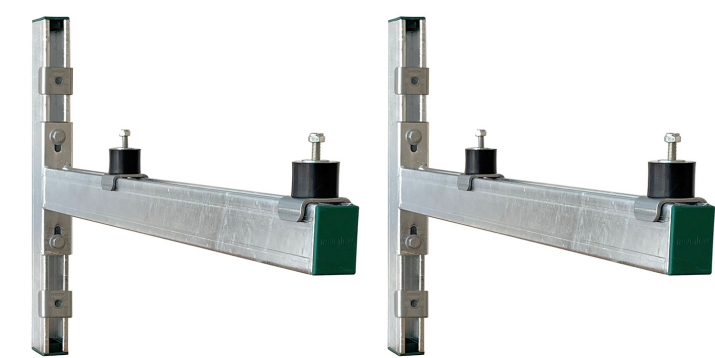


Walraven Wall Mounting Set 62|H

(H 19 20)

universal Mounting Set for outdoor appliances



Features and Benefits

- suitable for indoor and outdoor use
- universal mounting brackets for fixing indoor and outdoor appliances to the wall
- designed for the most common standard heat pumps (for heat pump models with female thread, Walraven Wall Mounting ISO Kit 6901998 needs to be ordered separately - see assembly instruction)
- stepless adjustable in height and wall distance
- with anti-vibration mounts type Walraven VibraTek® SB-MM
- material: steel 1.0332
- material: vibration damper; rubber SBR + NR 55°+-5 Shore A steel class 4.8
- surface treatment: hot dip galvanized (EN-ISO 1461)
- set consists of:
  - 2 Cantilever Arms type RapidStrut 62|H
  - 2 lengths of 500mm wall rail type RapidStrut 62|H
  - 4 vibration dampers with pre-assembled fasteners
  - 6 rail endcaps
  - fasteners to connect Cantilever Arms to the wall rail
  - assembly instruction
  - anchors for mounting to the wall not included (order seperately)

Part No.	Type	L	L1 (mm)	H (mm)	h (mm)	F <sub>a,z</sub> (N)	Pack 1	App.
6901975	62   H	819 mm	750	508	200	1,200	1	pc.
Max. allowed load F <sub>0,z</sub> per Set: 1.200 Newton (Total weight of the unit).								

