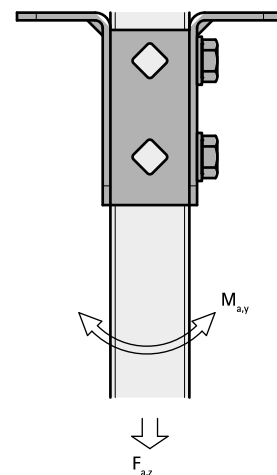


Walraven Strut T-shape Base Plate (BUP1000)

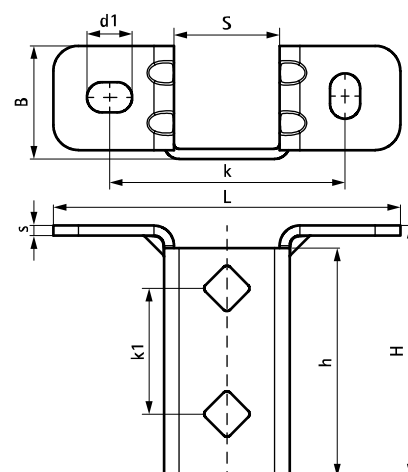
(H 12 12)



Features and Benefits

- highly flexible base plate for Strut rails
- open side of the rail can be turned to all sides
- extra safety by reinforced bending
- hole pattern is adapted to the hole pattern of Strut rails
- material: steel 1.0242 (S250GD) + ZM310 MAC
- surface protection:
 - product is part of the Walraven BIS UltraProtect® 1000 system
 - suitable for in- and outdoor applications
 - stands min. 1,000 hours salt spray test (max. 5% red rust) according to ISO 9227

Part No.	L	B	H	h	s	d1	S	k	k1	F _{a,z}	F _{a,z} 2	M _{a,y}	Pack 1
66588361	138 mm	45 (mm)	100 (mm)	91 (mm)	4.0 (mm)	18 x 12 (mm)	42 (mm)	95 (mm)	50 (mm)	3,636 (N)	3,636 (N)	164.0 (Nm)	10
F _{a,z} : max. allowed load in combination with 2 slide nuts M10, tightened with 40 Nm.													
F _{a,z} 2: max. allowed load in combination with 2 throughbolts M10, tightened with 40 Nm.													
M _{a,y} : max. moment in combination with 2 throughbolts M10, tightened with 40 Nm.													



Complementary

Walraven RapidStrut® Channel (BUP1000)
Walraven RapidStrut® Slide Nut
Walraven Washer (Flat) (BUP1000)

Complementary

BIS Hexagon Head Bolt (BUP1000)
WTB1 Throughbolt Anchor
Walraven Yeti® 130 Support System

Alternative

Walraven RapidStrut® Base Plate G2 (BUP1000)
Walraven Strut Base Plate Heavy Duty (BUP1000)