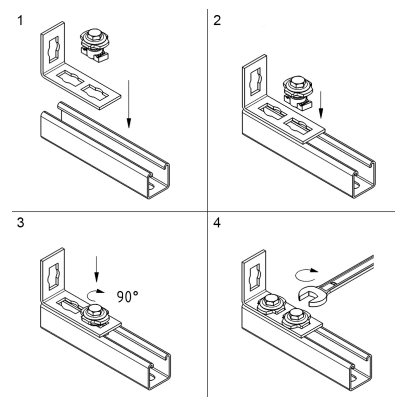


Walraven PushStrut Button

for easy installation of complex rail constructions

(H 29 05)

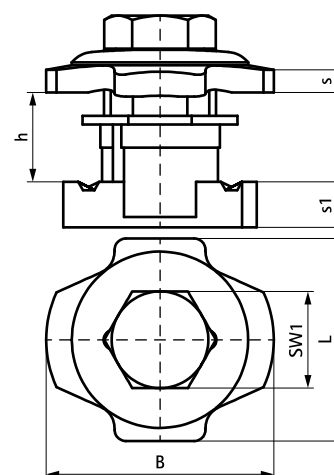


Features and Benefits

- universal button: easily combined with all common Strut profiles and all BIS PushStrut Connectors
- material: steel
- zinc plated
- teeth with force fit connections offer more stability
- timesaving and flexible
- easy to remove and reusable
- 3D constructions due to 3D Connectors

Part No.	L	B	h	s	s1	SW1	$F_{a,z}$ (N)	$F_{a,x}$ (N)	Pack 1
66519910	36 mm	40	15	4.0	8.0	17	5,000	3,000	50

The max. allowed load ($F_{a,z}$) in the table refers to rails and cantilever arms with a material thickness of 2.5 mm. The $F_{a,z}$ at a thickness of 2.0 mm profile thickness = 4,500 N. The $F_{a,z}$ at a thickness of 1.5 mm profile thickness = 3,500 N.



Complementary

Walraven PushStrut Connector Flat
Walraven PushStrut Construction Bracket
Q (zp)
BIS PushStrut Connector 90°

Complementary

Walraven PushStrut T-Connector
Walraven PushStrut 3D Connector