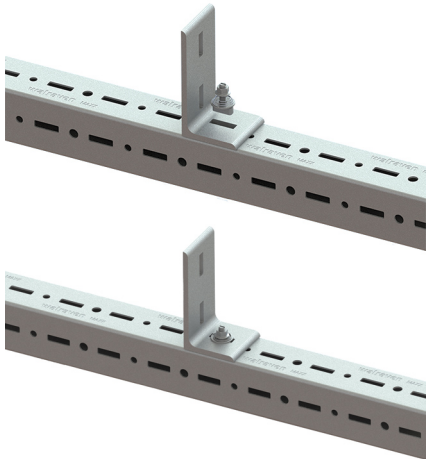
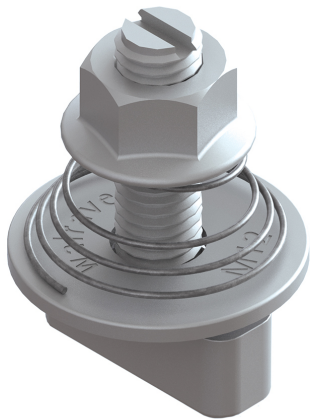


Walraven Maxx Hammerfix

for fixing to Maxx Heavy Rail Profiles

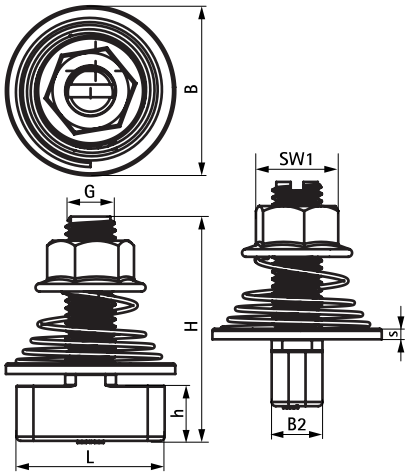
(H2 05 26)



Features and Benefits

- form-locking connector
- retains assembly in place before final tightening
- pre-assembled and ready to use for a quick fixing in profile perforation by a push and 90° turn
- with visible mark on top to see the position of hammer end
- with square shaft to block in the profile hole pattern when tightening
- material: steel, strength class 8.8; spring made of stainless steel (AISI 316)
- hot dip galvanized

| Part No. | Type | G | L | B | B2 | H | h | s | SW1 | T _{inst} (Nm) | F _{a,z} (N) | F _{a,x} (N) | Pack 1 |
|----------|------|-----|----|----|----|----|------|-----|-----|---------------------------|-------------------------|-------------------------|--------|
| 65219214 | HF | M12 | 35 | 40 | 12 | 53 | 12.8 | 2.5 | 19 | 75.0 | 14,500 | 5,000 | 25 |



Complementary
Walraven Maxx Heavy Rail Profile
Walraven Maxx Base Plate
Walraven Maxx Profile Connector 90°

Complementary
Walraven Maxx T-Connector
Walraven Maxx Linear Connector Set
Walraven Maxx U-Shape Bracket