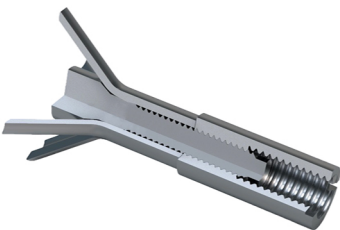
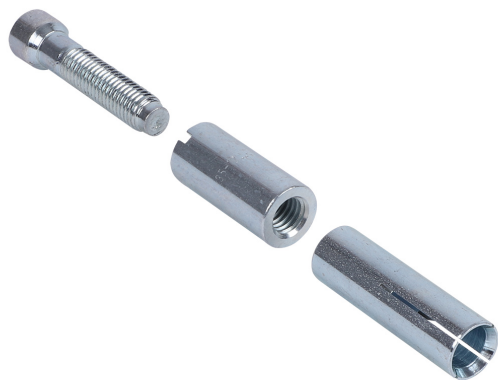


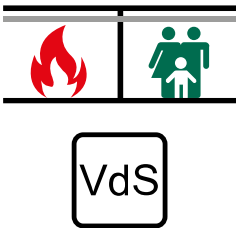
WGB-M Aerated Concrete Anchor

(L 03 82)

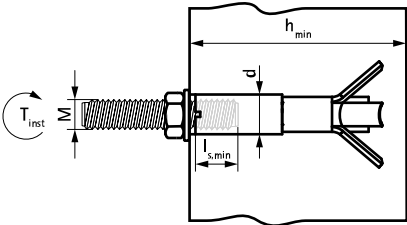


Features and Benefits

- internal thread connection allows flexible distance from the anchor to the fixture
- load can be applied immediately after installation
- installation does not require drilling
- four-way expansion provides high permissible loads, even in tensile areas of roofs and ceilings
- high load safety due to undercutting expansion
- material: steel
- zinc plated
- fire resistance class R30-R120 for design of anchorages under exposure to fire
- VdS approval for applications with stationary fire extinguishing systems



Part No.	Code	d (mm)	Thread (M)	l _{s,min} (mm)	h _{min} (mm)	T _{inst} (Nm)	Pack 1	Pack 2
6103510	WGB-M	16	M10	10-18	175	8	25	150
6103512	WGB-M	16	M12	12-18	175	8	25	150



Complementary
WGB-M Setting Tool
WIS Threaded Rod
BIS Hexagon Nut