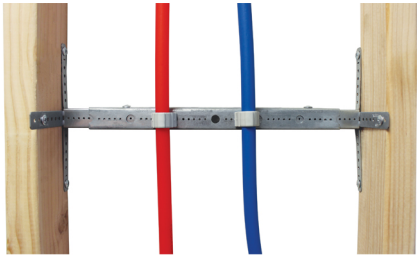
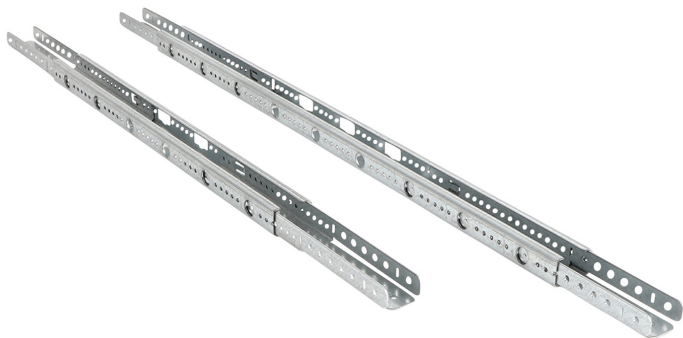


Multi-Purpose Telescoping Support (MPTS)

(02 05 212)



Features and Benefits

- this heavy-duty, adjustable, 3 piece bracket is used to support vertical piping and stub-outs on studs at 6 points
- adjustable for ease of use
- heavy duty profile supports any in-wall hardware
- hole pattern fits sliding and fixed stub-outs as well as a variety of clamps
- material: steel 1.0242
- pre-galvanized



Part No.	Model	Type	Pack 1
59492001	12 - 20"	MPTS1	25
59492002	18 - 26"	MPTS2	25