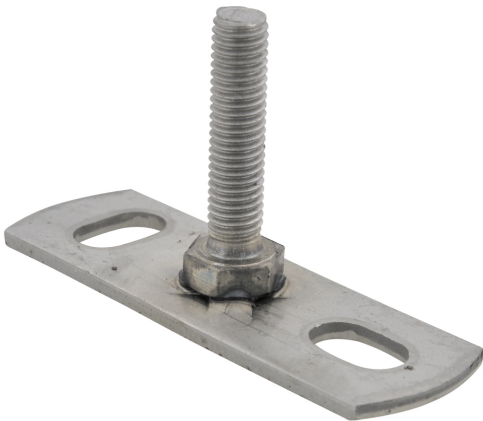


BIS Stainless Steel Wall Plate  
with Welded Stud Bolt 672

(M 65 10)

fixing to ceiling or floor



Features and Benefits

- fixings to ceiling or floor (only tension loads recommended)
- slots at 90° to each other to simplify fixing
- with resistance welded male stud bolt
- material: stainless steel 1.4301 (AISI 304)

Part No.	G	H (mm)	Lm1 (mm)	F <sub>a,z</sub> (N)	Pack 1	Pack 2
6727008	M8	44	35	2,500	50	200

