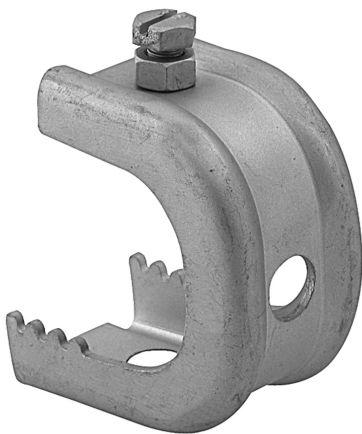


BIS Stainless Steel Beam Clamp Model O V2A

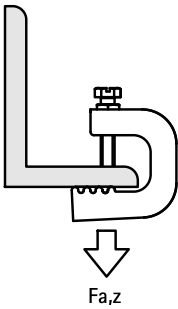
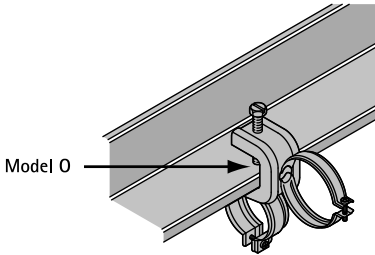
(M 64 10)

for flange



Features and Benefits

- for a solid fixing to steel construction without the need for welding or drilling
- up to flange thickness 45 mm
- with hole Ø 14 mm for fixing of BIS IC-clamp, stud bolt or S-Hook
- with serration for increased security
- material: stainless steel 1.4301 (AISI 304)
- see also: IC-clamp (for conduit or cable)



Part No.	A (mm)	F <sub>a,z</sub> (N)	Pack 1
6077720	≤20	1,100	25
6077730	≤30	1,200	25
6077745	≤45	1,300	25

