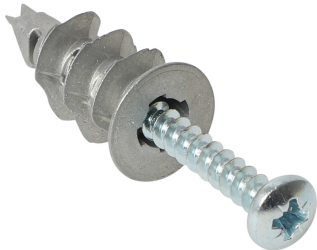


WRX Metal Plug

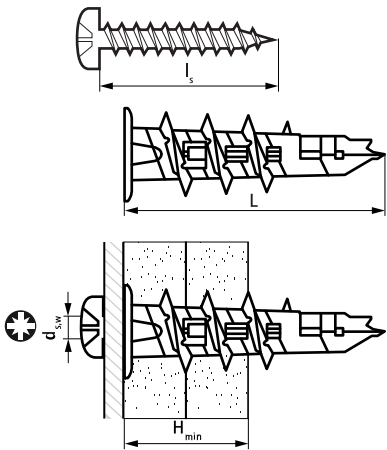
metal self-drilling anchor

(L 07 30)



Features and Benefits

- self-drilling
  - back twist lock allows screw removal without movement of the plug
  - sharp tip allows accurate positioning and installation
  - Application:
    - interior decorations
    - electrical fittings
  - material: die-cast zinc
- substrate type:
    - lightweight concrete
    - gypsum
    - chipboard
    - plasterboard



Part No.	Code	L	d <sub>s,w</sub>	l <sub>s</sub>	h <sub>min</sub>	Drive	Rec. Tension Load Chipbard (6mm pre drilling)	Rec. Tension Load Lightweight Concrete	Rec. Tension Load Gypsum Fiberboard	Rec. Tension Load Plasterboard (h=12.5mm)	Pack 1	Pack 2
			(mm)	(mm)	(mm)		(kN)	(kN)	(kN)	(kN)		
6229903	WRX MP 14x32	32 mm	4.5	30	12.5	PZ2	0.45	0.10	0.15	0.10	100	2,400

Given recommended loads include a safety factor of 3.