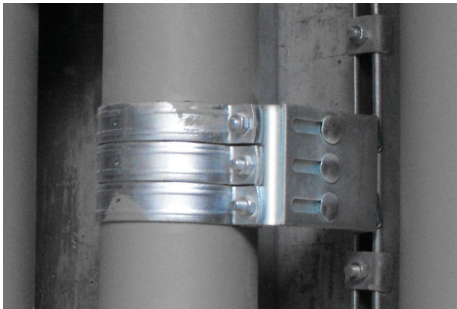


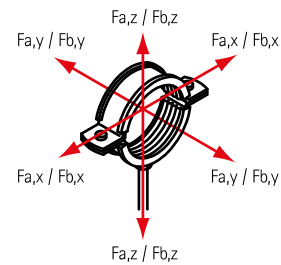
BIS Fixpoint Console 'Medium' (BUP1000)

(E 05 51)



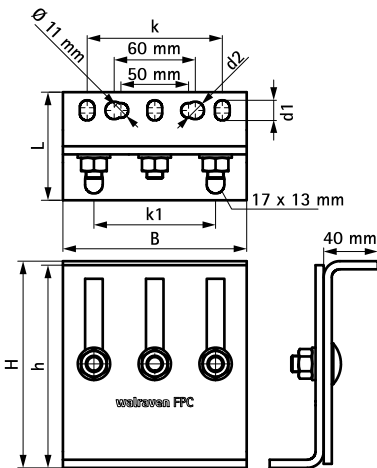
Features and Benefits

- suitable for BISOFIX® Cold FixPoint Clamps (see E 05 03)
- flexible use console module for high forces (depending on the situation, detailed design by technical service)
- can be used as a pipe connection point in conjunction with 2 or 3 heavy-duty clamps type HD500 up to max. 227 mm
- tightening torque 75 Nm for the console fixing screws
- connection to the building is recommended with metal anchors M12
- infinitely adjustable height and inclination, high corrosion protection
- material: steel 1.0332
- surface protection:
 - product is part of the Walraven BIS UltraProtect® 1000 system
 - suitable for in- and outdoor applications
 - stands min. 1,000 hours salt spray test (max. 5% red rust) according to ISO 9227



| Part No. | L | B | H | h | d1 | d2 | k | k1 | F _{a,z} | F _{a,y} | F _{a,x} | Pack 1 |
|----------|-------|------|-----------|------|---------|--------|------|------|------------------|------------------|------------------|--------|
| | | (mm) | (mm) | (mm) | (mm) | (mm) | (mm) | (mm) | (N) | (N) | (N) | |
| 6698206 | 80 mm | 136 | 153 - 268 | 150 | 15 x 11 | Ø 13.0 | 100 | 90 | 14,300 | 11,500 | 3,200 | 1 * |

** Depending on the situation, please contact Walraven Technical Support for advice on safe loads.
Note! Console, Clamps and Anchors are to be ordered separately.*



Complementary
BISOFIX® CF Cold FixPoint Clamp
Walraven Heavy Duty Clamp HD500
Walraven Heavy Duty Clamp HD500 (BUP1000)

Complementary
Walraven Heavy Duty Clamp HD500 (BUP1000)
WTB1 Throughbolt Anchor
WDI1 Drop-in Anchor