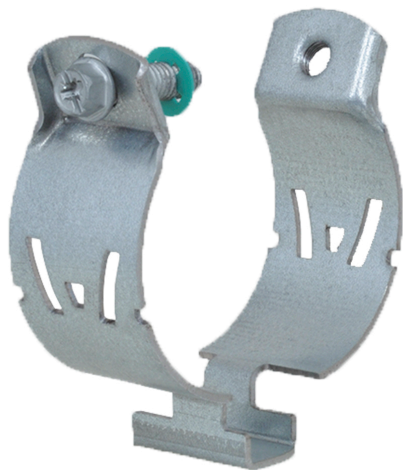


Walraven W1000 Strut Clamp

(H 32 215)

to be used with steel pipes and EMT conduit 18 - 60 mm



Features and benefits

- the new alternative to the standard Strut Clamp
- 3-way use, on strut, on threaded rod, directly on wall or ceiling
- one-piece design - no loose parts
- easier, faster, safer - installs with one hand
- 3-way screw head - Phillips, flat and hex
- unique design allows one clamp to fit multiple pipe sizes - less items to stock
- W Series Clamps are boxed for easy handling - no more bags
- material: steel 1.0242
- surface treatment: high grade Zn-Mg based coating (600 hours salt spray)
- Test Reports:
  - Strength and corrosion:UL 1565 Listed



| Part No. | D<br>(mm) | D / IPS<br>(") | D / EMT<br>(") | G    | s<br>(mm) | cs   | F <sub>a,z</sub><br>(lbf) | Pack 1 |
|----------|-----------|----------------|----------------|------|-----------|------|---------------------------|--------|
| 2015021  | 18 - 21   | 1/2            | 1/2            | 1/4" | 1.25      | 1/4" | 200                       | 50     |
| 2015027  | 23 - 27   | 3/4            | 3/4            | 3/8" | 1.25      | 1/4" | 200                       | 50     |
| 2015033  | 29 - 33   | 1              | 1              | 3/8" | 1.25      | 1/4" | 220                       | 25     |
| 2015042  | 38 - 42   | 1-1/4          | 1-1/4          | 3/8" | 1.25      | 1/4" | 220                       | 25     |
| 2015048  | 44 - 48   | 1-1/2          | 1-1/2          | 3/8" | 1.50      | 1/4" | 400                       | 25     |
| 2015060  | 56 - 60   | 2              | 2              | 3/8" | 1.50      | 1/4" | 400                       | 25     |

For additional testing information, please contact our Sales Office!

